

VERSATILE

Designed for portability and affordability, Verisight Ultra simplifies workflows while delivering exceptional image quality.

HIGH-RESOLUTION VIDEO

HD video resolution enables quick and accurate identification of blockages, defects or other issues.

EFFICIENT WORKFLOW

Large icons, essential commands, and WinCan Web connectivity streamline inspections.

MANEUVERABILITY

Compact design and wider stance conquer tight spaces and uneven terrain.

BUILT FOR DISTANCE

Tackle sprawling networks with confidence using 200 ft or 330 ft cables.

ADAPTABLE COMFORT

Work longer with less fatigue thanks to the adjustable height handle and tablet mount, optimizing ergonomics and minimizing glare.

WIRELESS FREEDOM

Control the camera, capture data, and share reports wirelessly, maximizing convenience and productivity on the job.



Protective Monitor & Keyword Case for Efficient, On-the-Job Reporting



SPECIFICATIONS

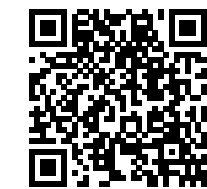
| Verisight Ultra | 330 ft | 200 ft |
|---|--|--|
| Application range | DN50 – DN300 | DN50 – DN300 |
| Push rod length | 330 ft (100 m) | 200 ft (60 m) |
| Push rod diameter | 0.43 in. (11 mm) | 0.35 in. (9 mm) |
| Material (frame/basket) | aluminum/stainless steel (powder-coated) | aluminum (powder-coated) |
| Dimensions* (WxHxD) | 25.39 x 33.7 x 18.66 in. (645 x 856 x 474 mm) | 22.83 x 27.80 x 21.66 in. (580 x 706 x 323 mm) |
| Weight* | 46.29 lbs/59.52 lbs (21 kg/27 kg) | 37.48 lbs (17 kg) |
| Meter counter | yes | yes |
| Coiler brake | yes, adjustable | yes, adjustable |
| E-box | toolless exchangeable | toolless exchangeable |
| Interfaces (E-box) operations via WiFi/App | 1x WiFi, control and monitoring possible via VisionReportApp, external power supply (1x AC IN) | 1x WiFi, control and monitoring possible via VisionReportApp, external power supply (1x AC IN) |
| Radio standard | WLAN: IEEE802.11 b/g/n | WLAN: IEEE802.11 b/g/n |
| Power supply | 110 – 230 VAC | 110 – 230 VAC |
| Exchangeable battery E-box | 2 pieces (optional) | 2 pieces (optional) |
| Battery type | Li-Ion | Li-Ion |
| Battery runtime** E-box | approx. 6h (3h/battery) | approx. 6h (3h/battery) |
| Battery capacity E-box | 6900 mAh/battery | 6900 mAh/battery |
| E-box ambient temperature range | 32° F to 104° F (0° C to 40° C) | 32° F to 104° F (0° C to 40° C) |
| Storage temperature range*** | -4° F to 158° F (-20° C to 70° C) | -4° F to 158° F (-20° C to 70° C) |
| Protection class**** | IP 54 | IP 54 |



Compatible with

- PTP50 HD camera head
- VisionReportApp****
- RAM® Mount tablet holder

* incl. push rod. without camera, batteries, control panel and trolley.
 ** battery life depends on the used control panel, camera and the environmental conditions.
 *** without batteries
 **** VisionReportApp available for Android >8.0 and iOS >12
 ***** without tablet



Don't take our word for it. Schedule a Demo here.

© 2024 Envirosight, LLC. All rights reserved.
 Specifications subject to change without notice.
 VERISIGHT ULTRA and Envirosight names and logos are trademarks of Envirosight.
 Patents and patents pending.



www.envirosight.com • (973) 252.6700

VERISIGHT ULTRA

NEXT GENERATION PUSH CAMERA TECHNOLOGY



POWERFUL

The Verisight Ultra rewrites the rules of pipe inspection. View every detail with crystal-clear HD video and maneuver any pipe size with the self-leveling, pan and tilt camera.



COLLABORATE

Stay connected and productive with Verisight Ultra's intuitive app, while WinCan Web Enterprise Cloud connectivity streamlines your workflow. Record HD video and pictures, share data via USB-Stick, link or email, and experience the freedom of wireless control.



1. OPEN A NEW PROJECT

Enter details like asset ID, inspector, address, etc.

2. LOWER THE PUSH CAMERA

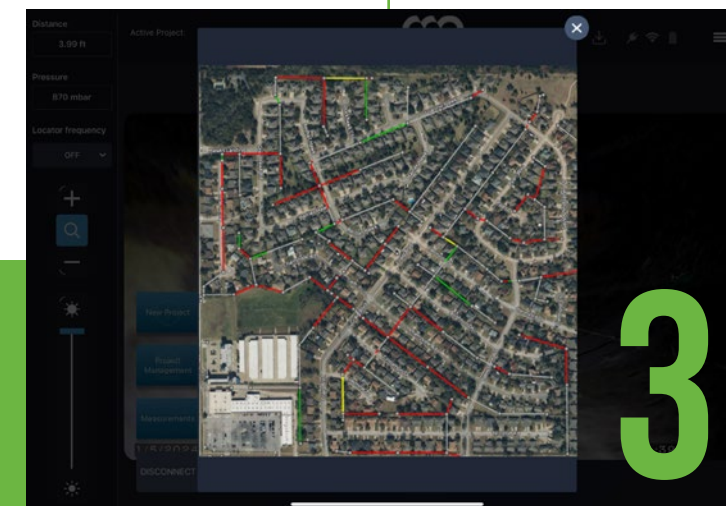
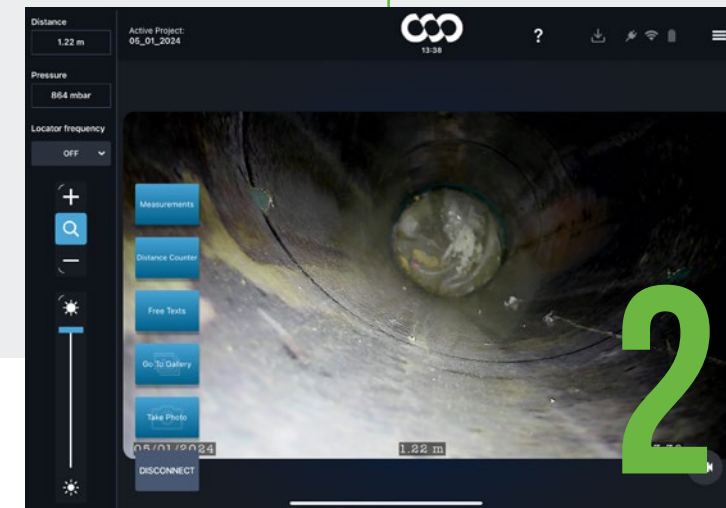
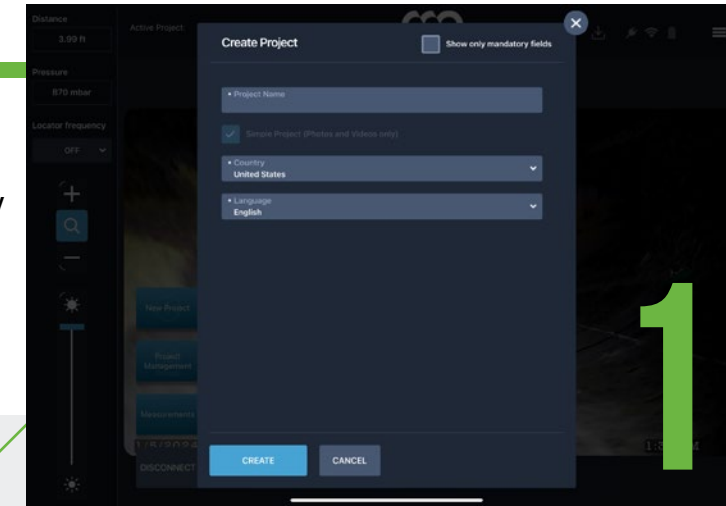
Start your inspection, documenting key points in the footage.

3. UTILIZE GIS VISUALS

Map it and create your work order.

CONNECTED

Wirelessly upload your inspections directly to WinCan Web Enterprise Cloud, the management platform for sewer inspection data. Review, edit, analyze and map inspection data online, and securely share results with your entire team.



OUR ADVANTAGE

Envirosight empowers municipalities, contractors, and engineers with next-generation pipe inspection technology, enabling informed decisions and efficient infrastructure management.

LOCAL PRESENCE

Our systems, part inventory and capabilities are strategically deployed through a network of distributors and channel providers. With more than 25 factory-certified service centers across North America, we're never far when you need help.

TRAINING

On-site training is available through our channel partners for many of our products and technologies, covering equipment care, operation and safety. Virtual training on demand and PACP training is also available upon request.

RESPONSIVENESS

With a full line of inspection technologies and a comprehensive online parts portal, you can be confident in our solutions and support. When unique challenges require unique capabilities, we even offer rental gear from 23 locations across the United States.

WARRANTY

Verisight Ultra is backed by one of the industry's most comprehensive warranties. Optional maintenance plans and extended warranties offer further cost predictability.

